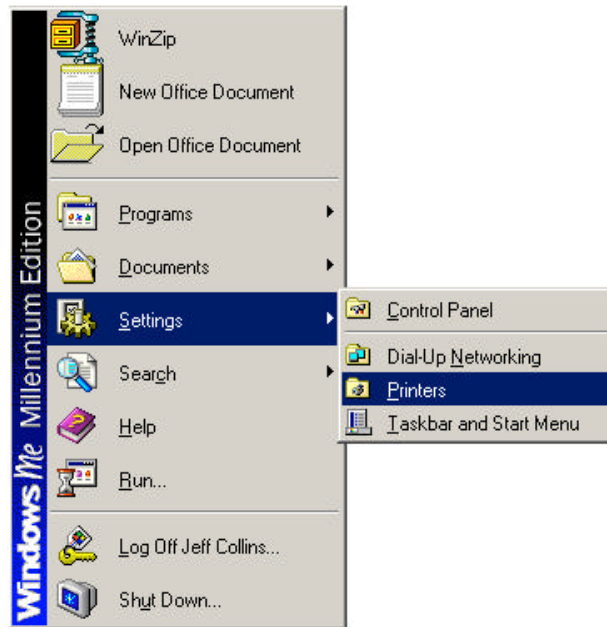




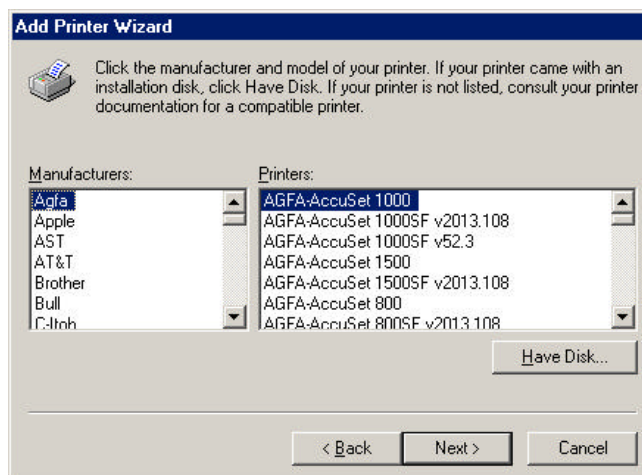
INSTALLATION INSTRUCTIONS

INSTALLING THE EPSON TM-T88II RECEIPT PRINTER For Windows 95, 98, Me, NT and Windows 2000 Only (NOT FOR WINDOWS Xp)

1. Select **Settings** -> **Printers** from the Start Menu.

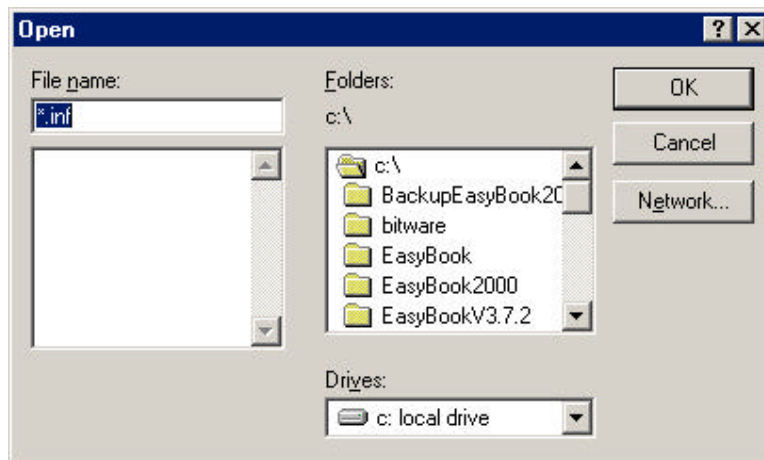


2. Click on **Add Printer**.
3. Click on **Next**.
4. Ensure **Local Printer** is Selected, then click on the **Next** button.
5. Click on the **Have Disk** button.

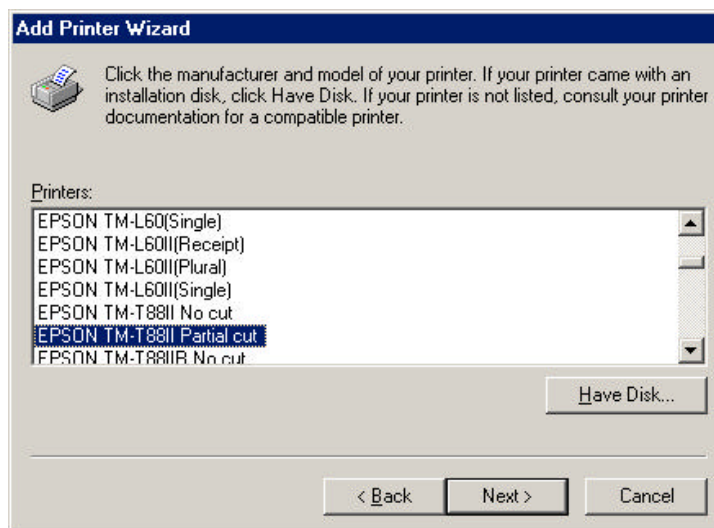




6. Click on the **Browse** Button.
7. Please ensure that the EasyBook 2000 Diskette is inserted into the CD-Rom Drive. From the Drives Box, as below, select D: Compact Disk Drive (or appropriate drive). From the Folders Box, Double click on the Epson Receipt Printer Drivers folder, double click on the operating system version you are using, such as Win98. A file called escpos.inf should appear under the File Name Box. If this is correct, Select OK.



8. You will then return to the previous form, click on the OK button.
9. A box listing the available printers will appear, please find the printer Epson TM-T88ii Partial Cut, and click on the Next button.



10. Ensure the LPT1 Printer Port is selected. Click on Next.
11. Click on Next to the Printer Name and Default Printer Option.

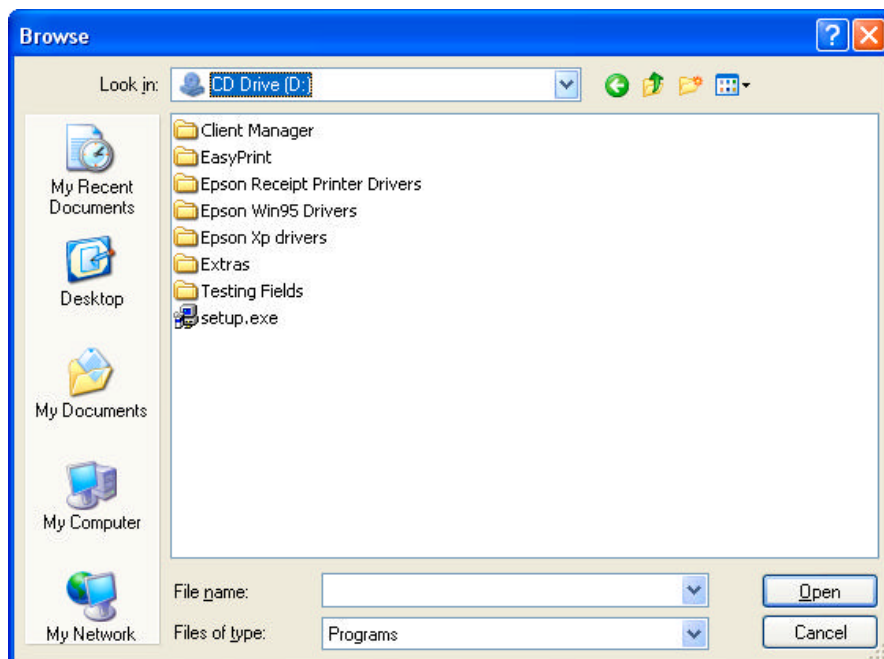


12. Ensure No is selected in the option Print test page.

13. Click on the Finish button to complete the installation of the receipt printer.

INSTALLING THE EPSON TM-T88II RECEIPT PRINTER For Windows Xp

1. Select **Run** from the Start Menu.
2. Click on the Browse Button.
3. A box will appear prompt for a file to be selected.\



4. From the Look in option located at the top of the box select the CD-Drive, This is usually the (D:) drive.
5. A list of directories should then appear in the larger box on the screen. From this box Double Click on the Epson Xp Drivers option.
6. A file should then appear in the same box called "ADT203dE.exe", select this file by clicking on it once, then click on the Open button located in the bottom right corner of the screen.
7. You should now have returned to the Run option that appeared in Item 1, however this time a file name should appear in the Open prompt line. Click on the OK button.
8. Click on the Next Button
9. Click YES to accept the licensing agreement.

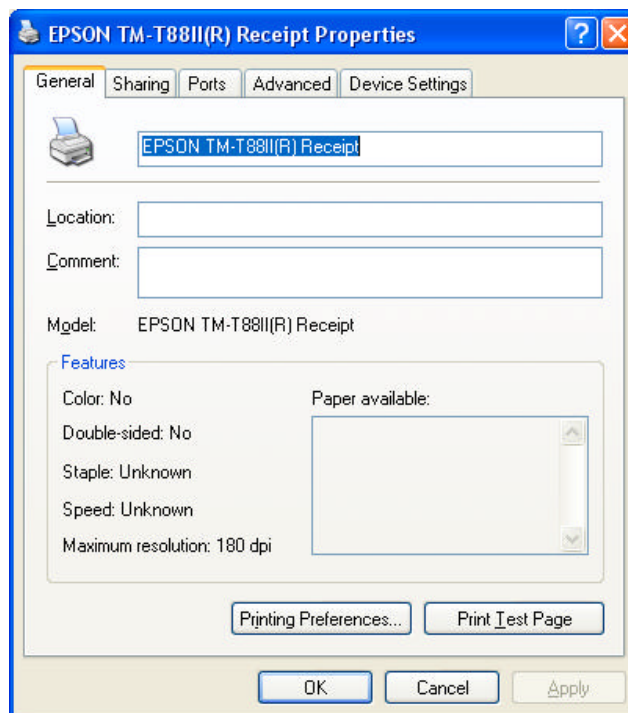


10. From the list of printer drivers, scroll down to find the printer “Epson TM-T88ii ® Receipt, click on the box located to the left of the name to ensure a ? appears in the box.
11. Click on the Next button.
12. Click on Next Again.
13. On completion a box will appear requesting whether you wish to restart your computer, Select the Option “No, I will restart my computer later.”
14. Click Finish. To complete the installation process.

SETTING PAGE SIZE AND PAPER CUTTING FOR WINDOWS xP

Windows xP drivers, by default do not cut the printed receipt when issuing tickets, as such you need to set the paper sizes within Windows xP to make the printer cut the ticket.

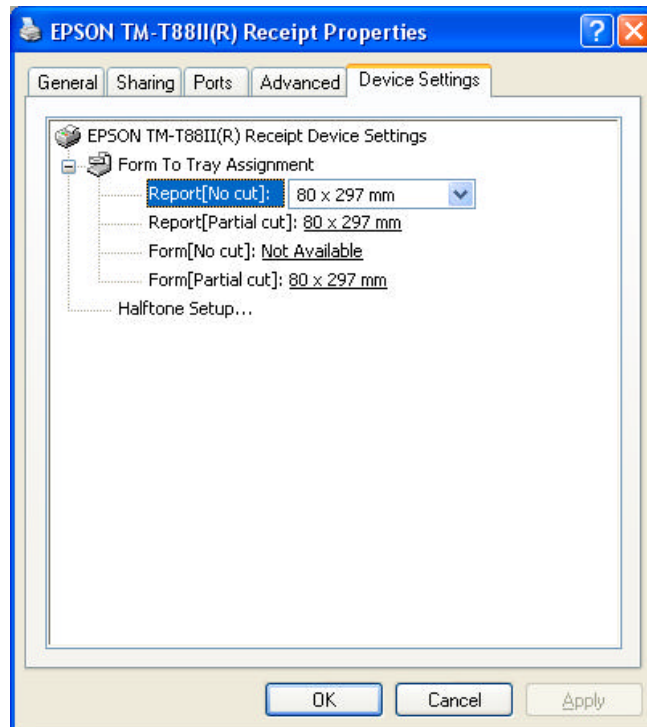
1. From the Start Menu, select the Printer and Faxes option.
2. Right mouse click on the Epson TM-T88II ® Receipt. This will bring up a menu, from which you need to select Properties.
3. A box will appear as follows:



4. Click on the Printing Preferences... box located towards the bottom of the screen.



5. Select the “Paper Quality” Tab. From which a screen will appear which will state the Paper Source is “Automatically Selected”.
6. You need to change this option to “Report (Partial Cut)”
7. Click on the OK button.
8. Now Click on the “Device Settings” Tab.



9. Within Device Settings you will have a number of Form to Tray Assignments. Change the Assignment Report (Partial Cut), which by default will say Not Available to “80 x 297mm”
10. Click on the OK button to complete the process.



INSTALLING EASYBOOK 2000

1. Select Run from the Start menu.
2. Click on Browse.
3. From the Look In box at the top of the form click on the down arrow to display a list of drives and directory, select the D: Compact Disc drive. If you cannot see the compact disk, select My Computer, then select the D: Compact Disk.
4. A list of files should then appear in the large box, one of which will be Setup.exe, select this file and click on Open.
5. Click on the OK button to begin the installation.
6. A dialog box "Installing EasyBook 2000, please stand by..." will appear.
7. At the message prompt, "EasyBook 2000 – Installation", click on the OK button.
8. Accept the directory as "C:\EasyBook2000\" and click on the button containing the computer and box image.
9. Press Enter to accept the program group = EasyBook2000.
10. The installation should take approximately 2 minutes, upon completion you will be informed that the installation has been completed successfully.